

# GT1020

## HMI Terminals

### The Micro-GOT Generation

Small, Flexible and Easy to Use



Ultra compact design with flexible mounting options



Bright 3.7 inch liquid crystal touch screen display



Innovative alarming, messaging and recipe management



Multi-language and True Type font support

# Creative Visual Solutions in a Compact Design

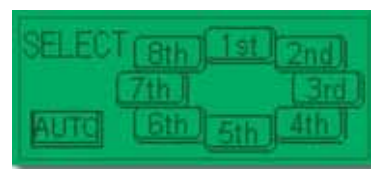


Reporting and control of tank levels, temperature and flow rates are just some of the applications the GT1020 HMI can be used for.

## The GT1020 – A micro GOT

### ■ High resolution touch screen

The new GT1020 series has a bright 3.7-inch STN black-and-white liquid crystal display with 3-color backlight for use in a variety of display applications. This micro unit is micro only in size. It is full of high function capabilities which deliver great benefits, for example:



High resolution LCD and up to 50 touch keys per screen offers outstanding user flexibility.

The GOT1000 platform is a family of high performance Graphical Operator Terminals (GOT). It combines the best in performance, graphics and functionality in a unique, ultra compact and robust package.

### ■ Intelligent functionality

Recipe management, innovative alarming and messaging are included as standard. The unit has a built-in memory for up to 4000 16-bit data words which can be used to store or exchange data with a connected PLC.

A multilevel security protection is implemented as well as graphical trending, data sampling and time scheduling functions .

High speed response to touch operations is guaranteed due to the fast processing speed of the internal processor.



Small dimensions, high function capabilities

## Ease of use

### ■ Easy screen design

Thanks to the touch panel design, touch keys can be quickly created and placed in a any position with 1 pixel accuracy.

### ■ Multi-language operation

The GT1020 can display a number of languages for a variety of countries and areas.

Language switching windows can be easily created allowing up to 10 languages to be switched between.

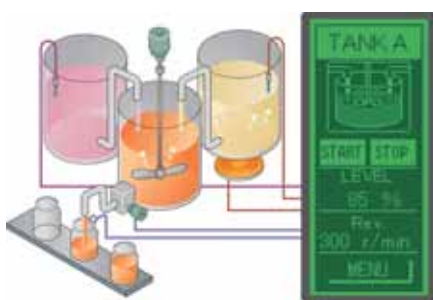
Window switching can take place not only for languages but also for different applications.

### ■ Free font selection

A variety of fonts are available including the standard type set and the windows type set. When windows fonts are selected, italic, underlined and underlined italic are also available.

### ■ Versatile mounting

Both horizontal and vertical mounting is available to meet the needs of different applications.



Application example for vertical mounting

## Enhanced visualization

Thanks to the 3-color backlight screen both flashing screens and different screen colors can be selected based on the type of information being displayed. For example, a PLC value could be used to switch the backlight status from green (condition OK) to red (warning).



Normal operation screen during automatic operation, etc.



Manual operation screen during setup change, etc.



Warning screen during material shortage, etc.

## Simple connectivity

### ■ Connector for communication with a PLC

The GT1020 is available with different models for RS232 or RS422 connection to the monitored device, for example a Mitsubishi PLC or third party device.

### ■ Personal computer interface

The PC interface on the rear of the GOT allows direct connection to a personal computers or laptop for sequence program adjustment, monitoring, testing and debugging.

### ■ Multi-unit connection for high cost performance

Two GT1020 units can be connected to a single PLC by daisy chaining the GT1020 units together.

### ■ Communication driver

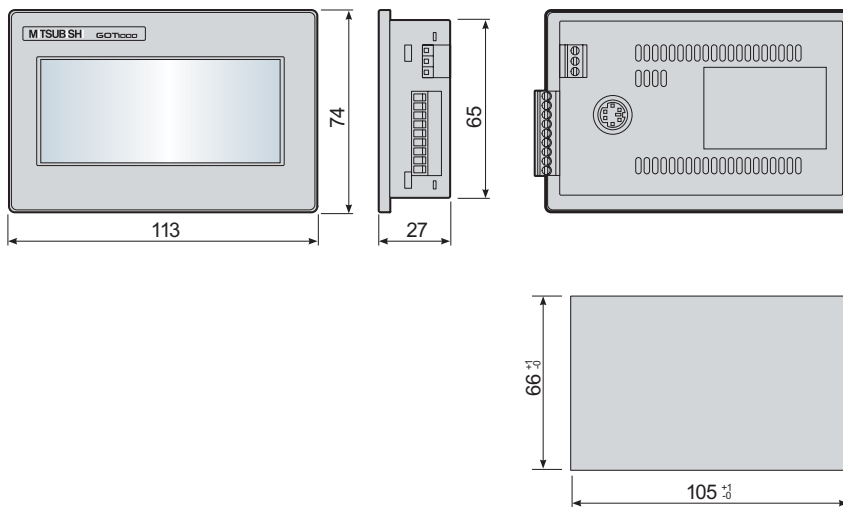
FX series PLC drivers are installed as standard but can be replaced/updated using GTWorks2 for other drivers allowing connection to devices such as Mitsubishi Q series or third party products.



Power terminal  
(depending upon drivers loaded in the GT1020)

# Specifications ///

Model	GT1020-LBL	GT1020-LBD	GT1020-LBD2
Display type	STN monochrome liquid crystal		
Display diagonal	3.7" (160 x 64 dots)		
Resolution (pixel)	128 x 64		
Display size (mm)	86.4 (width) x 34.5 (height)		
Colors	Monochrome, tri-color LED (green, red and orange), backlit display		
Brightness	200 cd/m2 (green); individual adjustabel		
Input type	Touch screen (analog)		
Number of touch keys	50 keys per screen maximum		
User memory	Built-in Flash ROM (512 kB)		
Serial communication	RS422 (terminal block)		RS232 (terminal block)
Programming port	Serial, RS232 (6-pin mini)		
Buzzer	Buzzer sound issued when touch key is pressed (sound length adjustable)		
Power supply	5 V DC ( $\pm 5\%$ )	24 V DC (+10%, -15%)	
Power consumption	1.1 W or less (220 mA/5 V DC) or 0.6 W or less (120 mA/5 V DC when backlight is OFF)	1.9 W or less (80 mA/24 V DC) or 1.2 W or less (50 mA/24 V DC when backlight is OFF)	
Protection	IP67		
Dimensions (W x H x D)	(113 x 74 x 27) mm		
Weight (kg)	0.2		
Programming software	GT Designer2 Version 2.43 or later		



All dimensions in mm

## EUROPEAN BRANCHES

MITSUBISHI ELECTRIC EUROPE B.V. 25, Boulevard des Bouvets F-92741 Nanterre Cedex Phone +33 (0)1 / 55 68 55 68	<b>FRANCE</b>
MITSUBISHI ELECTRIC EUROPE B.V. Gothaer Straße 8 D-40880 Ratingen Phone +49 (0) 21 02/4 86-0	<b>GERMANY</b>
MITSUBISHI ELECTRIC EUROPE B.V. Westgate Business Park, Ballymount IRL-Dublin 24 Phone +353 (0)1 4198800	<b>IRELAND</b>
MITSUBISHI ELECTRIC EUROPE B.V. Viale Colleoni 7 I-20041 Agrate Brianza (MI) Phone +39 039 / 60 53 1	<b>ITALY</b>
MITSUBISHI ELECTRIC EUROPE B.V. Carrera de Rubi 76-80 E-08190 Sant Cugat del Vallés (Barcelona) Phone +34 93 / 565 3131	<b>SPAIN</b>
MITSUBISHI ELECTRIC EUROPE B.V. Travellers Lane UK-Hatfield Herts. AL10 8 XB Phone +44 (0)1707 / 27 61 00	<b>UK</b>

## EUROPEAN REPRESENTATIVES

GEVA Wiener Straße 89 AT-2500 Baden Phone: +43 (0)2252 / 85 55 20	<b>AUSTRIA</b>	B.TECH A.S. Na Ostrove 84 CZ-58001 Havlickov Brod Phone: +420 (0)569 / 408 841	<b>CZECH REPUBLIC</b>	Ilan & Gavish Ltd. 24 Shenkar St., Kiryat Arie IL-49001 Petah-Tiqva Phone: +972 (0)3 / 922 18 24	<b>ISRAEL</b>	Beijer Electronics A/S Postboks 487 NO-3002 Drammen Phone: +47 (0)32 / 24 30 00	<b>NORWAY</b>	Craft Co. & Engineering d.o.o. Toplicina str.4 lok 6 SER-1800 Nis Phone: +381 (0)18 / 292-24-4/5, 523 962	<b>SERBIA</b>	Econotec AG Hinterdorfstr. 12 CH-8309 Nürensdorf Phone: +41 (0)44 / 838 48 11	<b>SWITZERLAND</b>
TEHNIKON Oktyabrskaya 16/5, Off.704 BY-220030 Minsk Phone: +375 (0)17 / 210 46 26	<b>BELARUS</b>	Beijer Electronics A/S Lautrupvej 1-3 DK-2750 Ballerup Phone: +45 (0)70 / 26 46 46	<b>DENMARK</b>	Kazpromautomatiks Ltd. KAZAKHSTAN 2, Scladskaya str. KAZ-470046 Karaganda Phone: +371 (0)784 / 2280	<b>KAZAKHSTAN</b>	MPL Technology Sp. z o.o. Ul. Krakowska 50 PL-32-083 Balice Phone: +48 (0)12 / 630 47 00	<b>POLAND</b>	Inea SR d.o.o. Karadjordjeva 12/260 SER-113000 Smederevo Phone: +381 (0)26 / 617 163	<b>SERBIA</b>	GTS Darulaceze Cad. No.43 KAT.2 TR-34384 Okmeydani-Istanbul Phone: +90 (0)212 / 320 1640	<b>TURKEY</b>
Koning & Hartman b.v. Woluwelaan 31 BE-1800 Vilvoorde Phone: +32 (0)2 / 257 02 40	<b>BELGIUM</b>	Beijer Electronics Eesti OÜ Pärnu mnt.160i EE-11317 Tallinn Phone: +372 (0)6 / 51 81 40	<b>ESTONIA</b>	Beijer Electronics SIA Vestienas iela 2 LV-1035 Riga Phone: +371 (0)784 / 2280	<b>LATVIA</b>	Sirius Trading & Services Str. Biharia nr.67-77 RO-013981 Bucuresti 1 Phone: +40 (0)21 / 201 1147	<b>ROMANIA</b>	AutoCont Control s.r.o. Radlinského 47 SK-02601 Dolný Kubín Phone: +421 (0)43 / 5868 210	<b>SLOVAKIA</b>	CSC Automation Ltd. 15, M. Raskova St., FL 10, Office 1010 UA-02002 Kiev Phone: +380 (0)44 / 494 33 55	<b>UKRAINE</b>
AKHNATON 4 Andrej Ljapchev Blvd. Pb 21 BG-1756 Sofia Phone: +359 (0)2 / 97 44 05 8	<b>BULGARIA</b>	Beijer Electronics OY Jaakonkatu 2 FIN-01620 Vantaa Phone: +358 (0)207 / 463 500	<b>FINLAND</b>	Beijer Electronics UAB Savanoriu Pr.187 LT-02300 Vilnius Phone: +370 (0)5 / 232 3101	<b>LITHUANIA</b>	ELEKTROSTILY Rubzovskaja nab. 4-3, No. 8 RU-105082 Moscow Phone: +7 495 / 545 3419	<b>RUSSIA</b>	CS Mtrade Slovensko s.r.o. Vajanského 58 SK-92101 Piestany Phone: +421 (0)33 / 7742 760	<b>SLOVAKIA</b>		
INEA CR d.o.o. Losinjska 4 a HR-10000 Zagreb Phone: +385 (0)1 / 36 940 -01/-02/-03	<b>CROATIA</b>	UTECCO A.B.E.E. S. Mavrogenous Str. GR-18542 Piraeus Phone: +30 211 / 1206 900	<b>GREECE</b>	Intehsis SRL bid. Traian 23/1 MD-2060 Kishinev Phone: +373 (0)22 / 66 4242	<b>MOLDOVA</b>	ICOS Byazanskij Prospekt, 8A, Office 100 RU-109428 Moscow Phone: +7 495 / 232 0207	<b>RUSSIA</b>	INEA d.o.o. Stepne 11 SI-1000 Ljubljana Phone: +386 (0)1 / 513 8100	<b>SLOVENIA</b>		
AutoCont CS s.r.o. Jelinkova 59/3 CZ-721 00 Ostrava Svinov Phone: +420 (0)59 / 5691 150	<b>CZECH REPUBLIC</b>	Meltrade Ltd. Fertő utca 14. HU-1107 Budapest Phone: +36 (0)1 / 431-9726	<b>HUNGARY</b>	Koning & Hartman b.v. Haarlerbergweg 21-23 NL-1101 CH Amsterdam Phone: +31 (0)20 / 587 76 00	<b>NETHERLANDS</b>	NPP "URALELEKTRA" Sverdlova 11A RU-620027 Ekaterinburg Phone: +7 343 / 353 2745	<b>RUSSIA</b>	Beijer Electronics AB Box 426 S-20124 Malmö Phone: +46 (0)40 / 35 86 00	<b>SWEDEN</b>	CBI Ltd. Private Bag 2016 ZA-1600 Isando Phone: +27 (0)11 / 928 2000	<b>SOUTH AFRICA</b>



Mitsubishi Electric Europe B.V. /// FA - European Business Group /// Gothaer Straße 8 /// D-40880 Ratingen /// Germany  
Tel.: +49(0)2102-4860 /// Fax: +49(0)2102-4861120 /// info@mitsubishi-automation.com /// www.mitsubishi-automation.com

Specifications subject to change /// Art. no. 206028-A /// 04.2007

All trademarks and copyrights acknowledged.